



STSW

Society for Transplant Social Workers

38th Annual Conference

SAN DIEGO 2023

Loews Coronado Bay Resort



Photo courtesy of Loews Coronado Bay Resort

Pre-Conference—Monday, October 9th

Conference—Tuesday, October 10th— Thursday, October 12th

PROGRAM DIRECTORY

3

Pre Conference
Meet & Greet Hosted by
Loews Coronado Bay Resort

4-6

Conference Day 1

6

COTA Welcome Reception
Poster Session

7-9

Conference Day 2

9-10

Conference Day 3

11

Conference Accommodations

11-12

Conference Pricing

This program will offer **18 CEUS approved by NASW**,
including **8 CEUs with STSW designated ethics content***

* Please submit to you state licensure board for consideration of Ethics CEUs

Program Key for Sessions:

E— STSW designated ethics content
G—General transplant focused session
H—Heart transplant focused session
K—Kidney/pancreas transplant focused session
LD—Living donor focused session
LI—Liver transplant focused session
LU—Lung transplant focused session
LV—LVAD/CMS focused session
P—Pediatric transplant focused session

PRE-CONFERENCE

MONDAY, OCTOBER 9TH

Addiction in Organ Transplant: A Practical Toolbox for Social Workers



G. Scott Winder, MD MSc FACLP
Associate Clinical Professor of
Psychiatry, Surgery and Neurology
University of Michigan

Commodore E

1:00pm—2:30pm — Part One

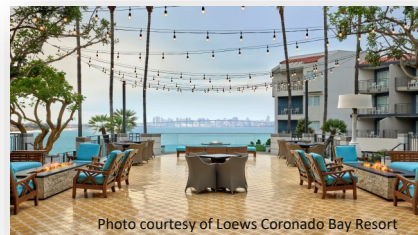
2:30pm—2:45pm — Break

2:45pm-4:15pm — Part Two

Meet and Greet

Hosted by the Loews Coronado Bay Resort

5:00pm—6:00pm Bayview Terrace



CONFERENCE DAY ONE

TUESDAY, OCTOBER 10TH

8:00am Opening Remarks—Commodore E

8:15am Children's Organ Transplant Association— Conference Welcome
Commodore E

8:30am **Keynote:**
Four Decades of Transplant Social Work:
Past and Present
Kay Kendall, MSW LISW-SW CCTSW-MCS



9:30am Break

10:00am **BREAKOUT SESSIONS**

K **Research 101: How to Start Research as a Transplant Social Worker**
Colleen Satarino LCSW-S, CCTSW & Gloria Chen LCSW-S, CCTSW &
Commodore A Tiffany Coco LCSW, CCTSW-MCS

G **Mental Health Challenges For Transplant Patients: Coping Strategies
and Support**
Commodore B Angela Samuelsen LICSW and Choua Vue-Brabant LCSW

H/LV **You Have A Plan and A New Heart, What Could Possibly Go Wrong? A
Case Presentation**
Commodore C Jennifer Kittinger, LCSW

LU **Buckle your seatbelts. We're going to Transplant World!: Cystic
Fibrosis Care to Lung Transplant**
Commodore D Nicole Reagen LISW-S, CCTSW and Amelia Robson LISW-S

H/LV/E **Jaded or Informed? A Case Study Second and Third Transplant
Evaluations in a Socially High Risk Patient**
Commodore E Kiersten Scruggs, LCSW

11:00am Break

11:15am

BREAKOUT SESSIONS

K **You're Never Too Old For Camp: Supporting Long-Term Survivors of Childhood ESRD**

Commodore B Devrah Otten, LCSW & Julie Guillen, CCLS & Meredith Vela, LCSW

G **Barriers and Facilitators of Transplant Listing for ESKD Patients with Limited Health Literacy**

Commodore C Colleen Satarino, LMSW CCTSW & Karen Crampton, LMSW

LV **Consensus of Psychosocial Best Practice for Adult LVAD Social Workers**

Commodore A Kristin Malaer LCSW-S CCTSW-MCS & Christopher Knoepke PhD, MSW, LCSW, FACC & Grant Yoder PhD Health and Behavioral Sciences & Prateeti Khazanie MD, MPH & Abigail Latimer PhD, MSW, LCSW, APHSW-C

LI **Meeting the Patient Where They Are: Addiction Treatment for Hospitalized Patients in Acute Alcoholic Liver Failure**

Commodore D Elizabeth Hooley LISW-S

G **Life Transition After Transplant**

Sarah Larmore LCSW, CCTSW

12:15pm

Lunch

1:25pm

BREAKOUT SESSIONS

K/LI **The Organ Is In... What Now? What Happens AFTER Discharge From Kidney/Liver Transplant**

Commodore A Jennifer Mize LCSW, CCTSW

G **Applying the Healthcare Literacy Research to Our Transplant Social Work Education Packet – A Real Life Experience**

Commodore B Pat Dennis LCSW, CCTSW, NSW-C & Janette Davenport LCSW

H/LV/E **Exploring Substance Use Disorder (SUD) in Heart Transplant/VAD Social Work**

Commodore C Johnna Marcus LICSW

G **Workshop for the New Transplant Social Worker: Helpful Tools and Techniques**

Commodore D Kay Kendall MSW, LISW-S, CCTSW-MCS

G/E **Turning Adversity into Opportunity: One Center's Response to Socioeconomic Disparities of Transplant & VAD Patients**

Commodore E Jenny Humphries LCSW, CCTSW-MCS

2:25pm

Break

2:40pm

BREAKOUT SESSIONS

P **Intro to Pediatric Transplant Social Work - Workshop for New and Seasoned Pediatric Transplant Social Workers**

Commodore A Molly Dugan LCSW, CCTSW-MCS

G/E **When You Have a Suicidal Patient**

Commodore B Sarah Larmore LCSW, CCTSW

K **You Are a Good Social Worker, Now You Need To Learn How To Be a Good Kidney Transplant Social Worker**

Commodore C Joy Melo LICSW, ACM-SW, CCTSW

LU **It's Not Always About Death: The Many Complexities of Grief & Loss in Lung Transplantation**

Commodore D Amy Van Zee LMSW

G **Starting, Growing, and Navigating Transplant Peer Support Groups**

Commodore E Jenna Rosenberg LMSW

3:40pm

Break

4:00pm

General Session:

Successful Pathways to Transplant for Undocumented Immigrants: The PRUCOL Process (Ethics)

Laura Ford LCSW & Stanley Kerznerman LCSW

Commodore E

COTA Welcome Reception & Poster Session

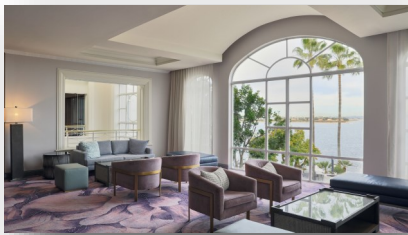


Photo courtesy of Loews Coronado Bay Resort

5:45pm—7:45pm Constellation Suite



CONFERENCE DAY TWO

WEDNESDAY, OCTOBER 11TH

8:00am

Opening Remarks

8:15am

General Session:

Welcome to Caregiving: The Things Caregivers Never Talk About

Erin Copelan BS - Business Administration, LMT, Best Selling Author

Commodore E

9:15am

Break

9:30am

General Session:

What's Money Got To Do With It? Acknowledging financial disparities, implementing financial interventions, and improving financial literacy in transplant and LVAD

Tiffany Coco LCSW, CCTSW-MCS & Jennifer Nixon LMSW & Shay Rogillio LCSW, CCTSW-MCS

Commodore E

10:30am

Break

10:45am

BREAKOUT SESSIONS

L

Stanford's Limited Sobriety Protocol: Incorporating the Substance Use Navigator Role in Liver Transplant

Commodore A

Amanda Norwood LCSW & Filza Hussain MD, FACLP & Linda Jarit SUDCC

K

The Kidney Transplant Support Group; Establishing a Port in the Storm of the Transplant Process

Commodore B

Hannah Graves LMSW

H/LV/E

Managing a Suicidal LVAD Patient in a Hospital Setting: A Case Study Discussing the Multidisciplinary Approach to Providing Ethical, Supportive, and eventually End of Life Care

Commodore C

Shay Rogillio LCSW, CCTSW-MCS

LD

Living Kidney Donation Social Work for New Social Workers

Katie Newton MSW, LICSW, CCTSW

G/E

What Happens When We Say No...But They Say Yes

Commodore E

Dori Muench LCSW, NSW-C, CCTSW

12:15pm

Business Meeting Lunch

1:30pm

BREAKOUT SESSIONS

LI/G Transplant Tailored Addiction Treatment

Commodore A Amber Gardner LCSW & Chad Snyder LCSW & Jody Forter LMFT

G/E Journal Club: The Use of Social Support in Organ Transplant

Commodore B Katie Newton MSW, LICSW, CCTSW & Gloria Chen LCSW-S, CCTSW

K/P/E Pediatric to Adult Transplant: My Experience Through a Social Work Lens

Commodore C Ariana Ramos MSW Student

G/E Utilizing Ethical Decision Making Models in Transplant and LVAD Psychosocial Assessments: Challenging the Risk of Interviewee Bias

Commodore D Kristin Malaer LCSW-S CCTSW-MCS

H/LV/E Overcoming Barriers to Advanced Therapies

Commodore E Debbie Gordon MSS, LCSW, CCTSW-MCS

2:30pm

Break

2:45pm

BREAKOUT SESSIONS

LV An Introduction Adult LVAD/MCS Social Work

Commodore A Kristin Malaer LCSW-S CCTSW-MCS

LI/E Ethical, Moral and Value based issues on the Liver Transplantation of a Prisoner

Commodore B Jacqueline Roman MSW, LMSW

LU A Multidisciplinary Team Journey: Navigating the Unprecedented Challenges of Lung Transplant in Patients with COVID-19 Pulmonary Fibrosis

Commodore C Marshia Caceres MSW, LCSW, CCTSW & Joshua Rhoades RN, BSN, CCTC-TCRN

LD Understanding The Role of the ILDA: Six Key Concepts— From The Perspective Of A Former Recipient Social Worker Turned Independent Living Donor Advocate

Commodore D Mickey Montemayor LCSW-S

3:45pm Break

4:00pm

General Session:

We Are Not Immune: How Implicit Bias Impacts Patient Selection and Organ Allocation in Transplantation (Ethics)

Megan Homsy LISW-S, CCTSW, NSW-C

Commodore E

CONFERENCE DAY THREE

THURSDAY, OCTOBER 12TH

8:00am

Opening Remarks

8:15am

General Session:

Eureka! How a Paragraph In A Book Is Helping Me Find My Way

Kathy Daley LISW-S, LCSW, CCTSW

9:15am

Break

9:30am

BREAKOUT SESSIONS

P / G

Absolute Social Contraindications for Pediatric Transplant Listing: A case study

Commodore A

Molly Dugan LCSW, CCTSW-MCS

LI

Sobriety Requirements for Transplant: Revising the evaluation and listing Policy for Alcoholic Liver Disease

Commodore B

Kristen DeVoe LICSW, CCTSW

K

Patient Support and its Effect on Kidney and Pancreas Transplantation at Lehigh Valley Hospital

Commodore C

Tyler Baldes, LSW

G

"We're "Not So Different, You And I": The Importance of Palliative Care Collaboration Across the Transplant Care Continuum

Commodore D

Allyson Smith Mitchell LCSW-C

10:30am Break

11:00am

General Session:

Pushing the Boundaries: The Crucial Need for OPO and Transplant Center Collaboration

Ashlei Lind LICSW & Rebecca Simon LMSW
Commodore E

12:00pm

Closing Remarks

CONFERENCE ACCOMODATIONS

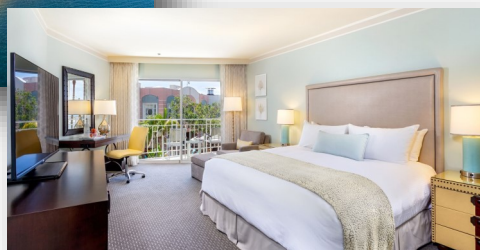
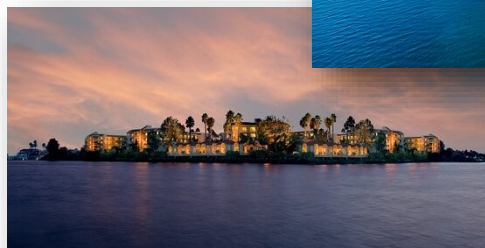
Our 2023 38th Annual STSW Conference will take place
at the **Loews Coronado Bay Resort in San Diego, CA.**

Pricing Information:

- Hotel rates starting at \$229 plus tax
- Group rate is available from October 5th - October 16th
- Group rate closes on September 15, 2023

Reservations can be made by:

- going to
<https://www.loewshotels.com/coronado-bay-resort/group-stsw-2023-annual-meeting>
- calling 800-815-6397



Photos courtesy of Loews Coronado Bay Resort

CONFERENCE PRICING

Pre-Conference & Conference & STSW Membership

Registration for the pre-conference on Monday, October 9th and the conference on Tuesday, October 10th - Thursday, October 12th. Also includes new STSW membership or renewal of annual STSW membership.

\$650

Conference Only & STSW Membership

Registration for the conference on Tuesday, October 10th - Thursday, October 12th. This registration DOES NOT include the pre-conference. Also includes new STSW membership or renewal of annual STSW membership.

\$550

STSW Membership Benefits include:

- A subscription to STSW newsletter
- Conference scholarships opportunity
- Other educational and training opportunities
- Professional credentials in: (if applicable)
- Certified Clinical Transplant Social Worker (CCTSW)
- Certified Clinical Social Worker – Mechanical Circulatory Support (CCSW-MCS)
- Dual Credential - Certified Clinical Transplant Social Worker and Certified Clinical Social Worker - Mechanical Circulatory Support (CCTSW-MCS)
- Mentorship program
- Research grants
- Access to member-only website for organ-specific bulletin board forum.

CONFERENCE PRICING

Pre-Conference & Conference

Registration for the pre-conference on Monday, October 9th and the conference on Tuesday, October 10th - Thursday, October 12th.

\$550 STSW Member

\$800 Non-STSW Member

\$400 Social Work Graduate Student

Conference Only

Registration for the conference on Tuesday, October 10th - Thursday October 12th.

This registration DOES NOT include the pre-conference.

\$450 STSW Member

\$650 Non-STSW Member

\$350 Social Work Graduate Student

Conference Two Day - Tuesday & Wednesday

Registration for Tuesday, October 10th and Wednesday, October 11th

\$350 STSW Member

\$500 Non-STSW Member

Conference Two Day - Tuesday & Thursday

Registration for Tuesday, October 10th and Thursday, October 12th.

\$300 STSW Member

\$425 Non-STSW Member

Conference Two Day - Wednesday & Thursday

Registration for Wednesday, October 11th and Thursday, October 12th.

\$300 STSW Member

Pre-Conference Only

Registration for the pre-conference on Monday, October 9th. This registration option DOES NOT include attendance to the conference.

\$100 STSW Member

\$150 Non-STSW Member

Conference One Day - Tuesday or Wednesday Only

Registration for EITHER Tuesday, October 10th or Wednesday, October 11th.

\$200 STSW Member

\$225 Non-STSW Member

Conference One Day - Thursday Only

Registration for Thursday, October 12th

\$100 STSW Member

\$125 Non-STSW Member